



COOLING BY EXPERTS

A Brand of Silver Star NextGen Pvt. Ltd.



Trust us to exceed your expectations with our commitment to quality, integrity and customer satisfaction.

“NEXTGEN SOLUTIONS FOR TODAY’S NEEDS.”

MESSAGE FROM CEO

SILVEXA was born from a simple belief—**experience matters**. With over **20 years of personal experience** in the refrigeration industry, I have learned that true success comes from understanding applications, selecting the right technology, and delivering systems that last.

Every project we undertake reflects our dedication to quality, safety, and long-term performance.

At SILVEXA, We aim to build lasting relationships based on **trust, transparency, and consistent** results. As we move forward, our focus remains on innovation, skill development, and customer satisfaction because your success is the true measure of our growth.

Thank you for placing your trust in Silver Star NextGen Pvt. Ltd.

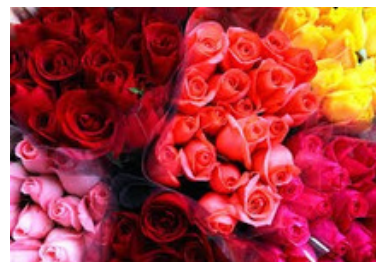
— CEO
Silver Star NextGen Pvt. Ltd.

ABOUT OUR COMPANY

SILVEXA is a premium cooling solution brand delivering advanced **cold storage, commercial refrigeration, and air-conditioning systems**, driven by over **20 years of individual industry experience**. Operating under **Silver Star NextGen Pvt. Ltd.**, SILVEXA stands for **engineering excellence, reliability, and next-generation technology**.

Our leadership brings two decades of hands-on experience in designing and executing projects across diverse applications. This personal expertise enables us to understand real-world challenges and deliver solutions that are **technically sound, cost-effective, and tailored to specific operational needs**.

We don't just install systems—we create **high-performance cooling environments** that protect your products, improve efficiency, and support long-term business growth.



VISION

To position SILVEXA as a trusted national brand in refrigeration and cold storage solutions recognized for innovation, performance, and long-term value.

MISSION

To deliver reliable, efficient, and cost-effective cooling solutions by combining deep industry experience with modern engineering practices and a customer first mindset.

WHAT SETS SILVEXA APART

- 20+ Years of Hands-On Industry Experience
- Precision-engineered, customized solutions
- Use of high-quality components & proven technologies
- Focus on energy efficiency & operational reliability
- Commitment to timelines, safety & customer satisfaction

From concept to commissioning, SILVEXA ensures confidence, consistency, and control.

OUR SOLUTIONS

◆ Cold Storage Solutions

(Fruits, Vegetables, Banana Ripening, Dairy, Pharma, Hospitality, Mushroom Cultivation, saffron Cultivation, Floriculture, Frozen & Processed Foods etc).

◆ Commercial & Industrial Refrigeration

◆ Multi Commodity Cold Storage (Freon/Ammonia)

◆ System Design & Heat Load Calculations

◆ Installation, Testing & Commissioning

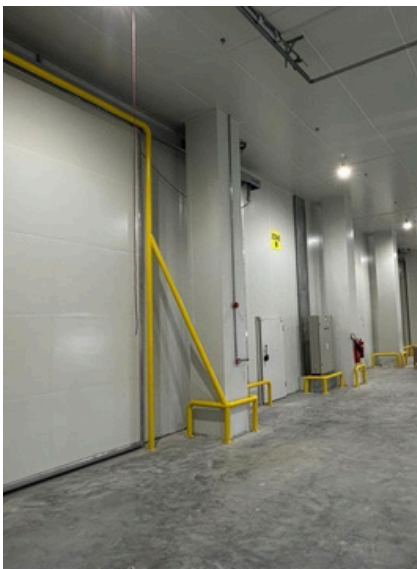
◆ AMC & After-Sales Technical Support

◆ Modular Portable Structure (Porta Cabin)

◆ Air Curtain and Strip Curtain

◆ Genuine Spare Parts

Each solution is engineered to ensure **maximum efficiency, safety compliance, and long service life.**



EVAPORATING UNITS

Cubical evaporating units by Silver Star NextGen Pvt. Ltd deliver efficient cooling, uniform airflow, and maximum space utilization.

KEY FEATURES

High-Grade SS 304 Construction

Body made from food-grade Stainless Steel 304, offering excellent resistance to corrosion and rust.

Long Service Life

SS 304 ensures durability in high humidity and low-temperature environments, reducing maintenance and replacement costs.

Uniform Air Distribution

Aerodynamically designed fans provide consistent airflow across the cold room, ensuring even cooling in all corners.

Compatible with Multiple Refrigerants

Designed to work with refrigerants such as R404A, R407C.

Hygienic & Food-Safe Design

Smooth SS surface prevents bacterial growth, making it suitable for fruits, vegetables, dairy, meat, seafood, etc.

Efficient Heat Exchange Coils

Equipped with high-quality copper tubes and aluminum fins for maximum cooling efficiency and uniform temperature distribution.

Low Noise Operation

Balanced fans ensure smooth and quiet performance, suitable for commercial and industrial environments.

Customizable Capacity Options

Available in various capacities for chillers, freezers, blast freezers, Mushroom Cultivation, ripening chambers etc.



EVAPORATING UNITS

Slim Line /Dual Discharge evaporating units by Silver Star NextGen Pvt. Ltd. deliver efficient cooling, uniform airflow, and maximum space utilization.

KEY FEATURES

Slim Line Compact Design

Low-profile design enables installation in cold rooms with limited ceiling height while maintaining optimal airflow and performance.

Stainless Steel SS 304 Construction

Fabricated with high-grade SS 304 for superior corrosion resistance, hygiene, and long service life.

Hygienic Drain Pan

SS 304 drain pan with proper slope to prevent water accumulation and ensure easy cleaning.

Ease of Installation and Maintenance

Lightweight, compact construction allows easy ceiling mounting, Removable panels provide quick access for inspection and servicing.

Wide Range of Applications

Suitable for compact chiller cold rooms used in food processing, cold storage, dairy, pharmaceuticals, and hospitality industries.

Low Noise Operation

Balanced fans ensure smooth and quiet performance, suitable for commercial and industrial environments.

Compatible with Multiple Refrigerants

Designed to work with refrigerants such as **R404A, R407C.**



CONDENSING UNITS

Silver Star NextGen Pvt. Ltd. provides compact, energy-efficient condensing units delivering reliable cooling for commercial and industrial applications.

KEY FEATURES

High-Efficiency Compressor

Equipped with reliable compressors (Scroll/Hermatic/Semi-Hermatic) for consistent cooling performance and long service life.

Energy-Efficient Operation

Optimized condenser design reduces power consumption and operating costs.

Low Noise & Vibration

Balanced fans ensure quiet and smooth operation.

Multiple Refrigerant Compatibility Eco friendly.

Compatible with R404A, R407C

Safety & Protection Features

Includes HP/LP cut-out, oil protection (where applicable), and thermal protection for compressor safety.

Customizable Capacity Options

Available in different capacities to match various cold room sizes and applications.

Reliable Performance in Indian Conditions

Designed to operate efficiently in high ambient temperatures (up to 52°C).

Robust & Weather-Resistant Housing

Heavy-duty powder-coated enclosure protects against corrosion, dust, and outdoor conditions.

High-Performance Condenser Coil

Copper tube with aluminum fin coils ensure fast heat rejection and stable system performance.

Easy Installation & Maintenance

Compact design allows quick installation with easy access to service components.

High Airflow Condenser Fans

Heavy-duty axial fans provide efficient heat dissipation even in high ambient temperatures.



KEY TECHNICAL HIGHLIGHTS

SILVEXA EVAPORATING UNIT	SLIM LINE/ DUAL DISCHARGE POSITIVE TEMPERATURE EVAPORATING UNIT WITH R407C/R404A				
	COOLING CAPACITY AT +4 DEG C ROOM TEMPERATURE				
Description/ Model R407 C		SSAC06K07-I2SL	SSAC10K07-I3SL	SSAC15K07-I4SL	SSAC20K07-I5SL
Description/ Model R404 A	Units	SSAC06K04-I2SL	SSAC10K04-I3SL	SSAC15K04-I4SL	SSAC20K04-I5SL
Cooling Capacity	Btu/Hr	6000	10000	15000	20000
Body Material	Type	SS 304	SS 304	SS 304	SS 304
No. of Circuits	Nos	1	1	1	1
Power Supply	V/Ph/Hz	230/1/50	230/1/50	230/1/50	230/1/50
Fan Motor	Type	Impellor Fan / AL	Impellor Fan / AL	Impellor Fan / AL	Impellor Fan / AL
	Qty	2	3	4	5
	Watt	16	16	16	16
Fan Diameter	mm	250	250	250	250
Air Flow	CMH	1400	2100	2800	3500
Air Throw	Ft	12	12	12	12
Coil Material	Tube	Copper	Copper	Copper	Copper
Defrost	Type	Air	Air	Air	Air
Size (L X W X H)	mm	900 X 550 X 230	1250 X 550 X 230	1650 X 550 X 230	1950 X 550 X 230

SILVEXA EVAPORATING UNIT	CUBICAL TYPE NEGATIVE TEMPERATURE EVAPORATING UNIT WITH R404A				
	COOLING CAPACITY AT -23 DEG C ROOM TEMPERATURE				
Description/ Model R404 A	Units	SSLT06K04-I2	SSLT09K04-I2	SSLT12K04-I2	SSLT18K04-I3
Cooling Capacity	Btu/Hr	6000	9000	12000	18000
Body Material	Type	SS 304	SS 304	SS 304	SS 304
No. of Circuits	Nos	1	1	1	1
Power Supply	V/Ph/Hz	230/1/50	230/1/50	230/1/50	230/1/50
Fan Motor	Type	Axial Fan	Axial Fan	Axial Fan	Axial Fan
	Qty	2	2	2	3
	Watt	85	140	180	140
Fan Diameter	mm	300	350	400	350
Air Flow	CMH	3230	4726	7531	8150
Air Throw	Ft	16	20	22	20
Coil Material	Tube	Copper	Copper	Copper	Copper
Defrost	Type	Electrical	Electrical	Electrical	Electrical
Size (L X W X H)	mm	1200 X 500 X430	1320 X 460 X 500	1320 X 460 X 550	1750 X550 X 500

SILVEXA CONDENSING UNIT	NEGATIVE TEMPERATURE CONDENSING UNIT WITH R404A				
	COOLING CAPACITY AT -23 DEG C ROOM TEMPERATURE				
Description/ Model R404 A	Units	SSLT06K04-O	SSLT09K04-O	SSLT12K04-O	SSLT18K04-O
Cooling Capacity	Btu/Hr	6000	9000	12000	18000
Power Supply	V/Ph/Hz	415/3/50	415/3/50	415/3/50	415/3/50
Chassis	Nos	1	1	1	1
Compressor	Type	Hermetic Recip	Hermetic Recip	Hermetic Recip	Hermetic Scroll
	Qty	1	1	1	1
Fan Motor	Qty	1	1	2	1
Body Material	Type	GI Powder Coated	GI Powder Coated	GI Powder Coated	GI Powder Coated
Size (L x W x H)	mm	1030 X 495 X 670	1030 X 495 X 670	1030 X 495 X 1130	1242 X 900 X 950

HP/LP/SPPR IN ALL MODELS. EXPANSION DEVICE AND FILTER DRIER.

HP/LP/SPPR IN ALL MODELS, EXPANSION DEVICE AND FILTER DRIER.

Note: Specifications are subject to change without prior notice.
Units tested upto 52 Degree Celcius ambient as per standard.

“Cooling Without Compromise”

KEY TECHNICAL HIGHLIGHTS

SILVEXA EVAPORATING UNIT		CUBICAL TYPE POSITIVE TEMPERATURE EVAPORATING UNIT WITH R407C/R404A							
		COOLING CAPACITY AT +4 DEG C ROOM TEMPERATURE							
Description/ Model R407 C	Units	SSAC10K07-I2	SSAC15K07-I3	SSAC20K07-I3	SSAC30K07-I3	SSAC40K07-I3	SSAC40K07-I2	SSAC60K07-I2	SSAC80K07-I2
Description/ Model R404 A	Units	SSAC10K04-I2	SSAC15K04-I3	SSAC20K04-I3	SSAC30K04-I3	SSAC40K04-I3	SSAC40K04-I2	SSAC60K04-I2	SSAC80K04-I2
Cooling Capacity	Btu/Hr	10000	15000	20000	30000	40000	40000	60000	80000
Body Material	Type	SS 304	SS 304	SS 304	SS 304	SS 304	SS 304	SS 304	SS 304
No. of Circuits	Nos	1	1	1	1	1	1	2	2
Power Supply	V/Ph/Hz	230/1/50	230/1/50	230/1/50	230/1/50	230/1/50	230/1/50	415/3/50	415/3/50
Fan Motor	Type	Axial Fan	Axial Fan	Axial Fan	Axial Fan	Axial Fan	Axial Fan	Axial Fan	Axial Fan
	Qty	2	3	3	3	3	2	2	2
	Watt	140	140	180	180	250	550	815	815
Fan Diameter	mm	350	350	400	400	450	550	630	630
Air Flow	CMH	4930	7395	10710	11110	15300	16500	22800	23900
Air Throw	Ft	18	18	25	25	38	42	45	45
Coil Material	Tube	Copper	Copper	Copper	Copper	Copper	Copper	Copper	Copper
Defrost	Type	Air	Air	Air	Air	Air	Air	Air	Air
Size (L X W X H)	mm	1330 X 430 X 500	1730 X 430 X 500	1730 X 430 X 550	1730 X 430 X 550	1830 X 560 X 700	1830 X 560 X 700	2350 X 900 X 780	2350 X 900 X 780

SILVEXA CONDENSING UNIT		POSITIVE TEMPERATURE CONDENSING UNIT WITH R407C/R404A							
		COOLING CAPACITY AT +4 DEG C ROOM TEMPERATURE							
Description/ Model R407 C	Units	SSAC10K07-O	SSAC15K07-O	SSAC20K07-O	SSAC30K07-O	SSAC40K07-O	SSAC40K07-O	SSAC60K07-O	SSAC80K07-O
Description/ Model R404 A	Units	SSAC10K04-O	SSAC15K04-O	SSAC20K04-O	SSAC30K04-O	SSAC40K04-O	SSAC40K04-O	SSAC60K04-O	SSAC80K04-O
Cooling Capacity	Btu/Hr	10000	15000	20000	30000	40000	40000	60000	80000
Power Supply	V/Ph/Hz	230/1/50	230/1/50	415/3/50	415/3/50	415/3/50	415/3/50	415/3/50	415/3/50
Chassis	Nos	1	1	1	1	1	1	2	2
Compressor	Type	Hermetic Recip	Hermetic Recip	Hermetic Scroll	Hermetic Scroll	Hermetic Scroll	Hermetic Scroll	Hermetic Scroll	Hermetic Scroll
	Qty	1	1	1	1	1	1	1 in each chassis	1 in each chassis
Fan Motor	Qty	1	1	1	2	2	2	2 in each chassis	2 in each chassis
Body Material	Type	GI Powder Coated	GI Powder Coated	GI Powder Coated	GI Powder Coated	GI Powder Coated	GI Powder Coated	GI Powder Coated	GI Powder Coated
Size (L X W X H)	mm	760 X 340 X 540	760 X 340 X 540	1030 x 495 x 670	1030 x 495 x 1130	1030 x 495 x 1130	1030 x 495 x 1130	1030 x 495 x 1130	1030 x 495 x 1130

HP/LP IN ALL MODELS, SPPR IN 20000 BTUH AND ABOVE MODELS, EXPANSION DEVICE AND FILTER DRIER.

Note: Specifications are subject to change without prior notice.
Units tested upto 52 Degree Celcius ambient as per standard.

“SILVEXA-Where Innovation Meets Cooling”

COLD ROOM CONTROL PANELS

KEY FEATURES

Reliable Temperature Control

Maintains precise cold room temperature using advanced digital temperature controllers.

Phase Protection System

Protects equipment from phase failure, phase reversal, and voltage imbalance (especially important in Indian power conditions).

User-Friendly Digital Display

Clear LED/LCD display shows real-time temperature, alarms, and operating status.

Automatic & Manual Operation Modes

Allows easy switching between auto and manual modes for flexibility and maintenance.

Defrost Control Facility

Supports time-based or temperature-based defrost.

Alarm & Fault Indication

Visual and audible alarms for temperature deviation, sensor failure, power failure, and system faults.

Customizable Panel Design Optional.

Can be customized based on capacity, compressor type, and customer requirements.

***“Next-Generation Cooling Solutions
You Can Trust”***

COLD ROOM PUF PANELS

KEY FEATURES

High-Density PUF Insulation

High-density (40–42 kg/m³) Eco Friendly PUF for excellent thermal insulation and minimal heat loss.

Pre-Painted GI / SS Sheet Cladding

Outer and inner surfaces available in PPGL, or SS 304, offering durability, hygiene, and corrosion resistance.

High Thermal Efficiency

Low thermal conductivity (approx. 0.020–0.024 W/mK) for superior insulation performance.

Customizable Panel Thickness

Available in 40 / 50 / 60 / 80 / 100 / 120 / 150 mm thickness to suit chiller, freezer and blast freezer.

Excellent Temperature Retention

Ensures stable internal temperature, reducing compressor running time and energy consumption.

Tongue & Groove / Metal Cam-Lock System

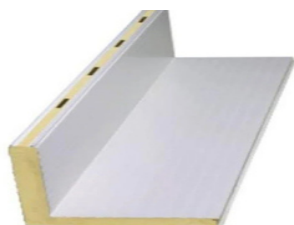
Precision-engineered joint system ensures airtight sealing, fast installation, and easy dismantling.

Moisture & Vapor Resistant

Closed-cell foam structure resists moisture absorption and prevents condensation.

Various Options available based on any Specific need

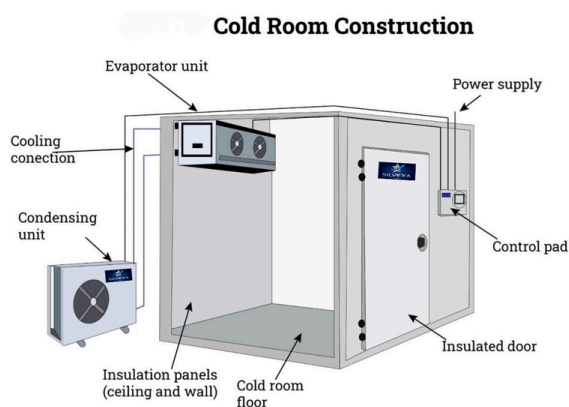
PIR/ PUR/Rockwool PUF Panels.



OUR SERVICES

END-TO-END COOLING SOLUTIONS

Complete solutions covering design, manufacturing, installation, and after sales support. We ensure smooth execution, reliable performance, and long-term efficiency.



MODULAR COLD ROOMS

Flexible and scalable cold storage solutions tailored to your business needs. Engineered for efficient cooling, easy expansion, and long-lasting performance.

MUSHROOM CULTIVATION CHAMBERS

Controlled environment chambers with precise temperature and humidity management. Designed to improve yield, quality, and cultivation efficiency.



OUR SERVICES

COMMERCIAL REFRIGERATION SYSTEMS

High-performance refrigeration systems designed for retail, industrial, and commercial applications. Built for durability, safety, and consistent temperature control.



BLAST CHILLERS AND BLAST FREEZERS

Advanced systems for rapid cooling and preservation of products. They maintain freshness, extend shelf life, and meet industry standards.

CUSTOMIZED, TAILOR-MADE SOLUTIONS

Fully customized systems designed to match your specific requirements and space. From concept to execution, we deliver solutions that fit perfectly.



PRESENCE ACROSS INDIA



Delhi | Uttar Pradesh | Haryana | Chandigarh | Pune |
Ahmedabad | Hyderabad | Bangalore | Mumbai | Punjab
| Chennai | Madhya Pradesh | Raipur | Kolkata | Patna |
Rajasthan | Uttarakhand | Jabalpur | Vishakhapatnam

THANK YOU

WE ARE READY TO ASSIST YOU

Thank you for choosing Silver Star NextGen Pvt. Ltd. We truly appreciate your trust in our expertise and solutions.

Our team is committed to delivering quality, innovation, and reliable service at every step. We look forward to building a successful and long-lasting partnership with you.



Corporate Office :

Silver Star NextGen Pvt. Ltd.
241, Level 2, Elegance Tower , Jasola
district Centre, Jasola, New Delhi-
110025



info@silverstarnextgen.com



9599053996



www.silverstarnextgen.com

Customer Care:

customersupport@silverstarnextgen.com

Follow us on:

